



Product technical sheet

ROBINIA RB1361



1 - 12 years



1 kids



10,8 m²

Material specification

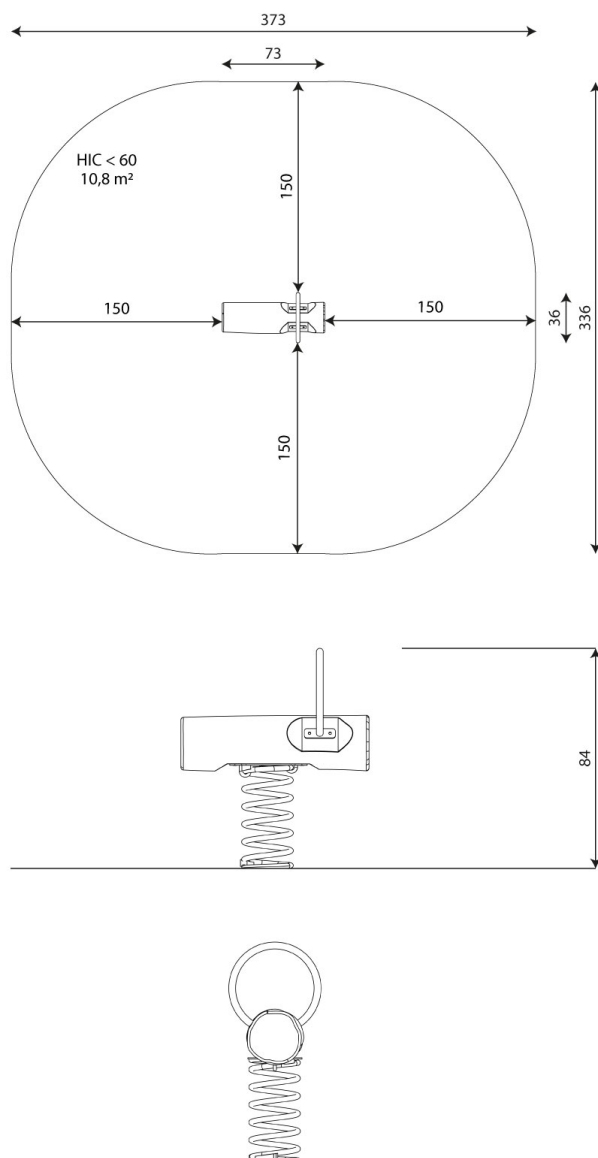
- Construction made of Robinia - very durable acacia wood with a diameter of ~ 22 cm without sharp edges, resistant to weather conditions,
- Powder galvanized and powder coated steel construction,
- Steel springs 20 mm, iron phosphorated and powder coated,
- Handles made of stainless steel,
- Stainless steel screws and/or screws covered with plastic caps,
- Stainless steel screws,



Physical development



rocking



Product technical sheet

ROBINIA RB1361

Product data

| | |
|--------------------------------|--------------|
| Length | 73 cm |
| Width | 36 cm |
| Total height | 84 cm |
| Age group | 1 - 12 years |
| Number of users | 1 kids |
| Safety zone | 10,8 m2 |
| Free fall height | <60 cm |
| In accordance with norm EN | 1176-1:2017 |
| Weight of the heaviest part | 72 kg |
| Dimensions of the largest part | 310x18x18 cm |
| Availability of spare parts | YES |
| Installation time | 1,0 h |

Data is subject to change without prior notice.

Additional information

- equipment intended for public playgrounds;
- equipment has a certificate issued by an accredited entity or a declaration of conformity;
- no sharp edges or chinks that would pose a danger of jimmie the head, fingers or any other body parts;
- anchoring on flat surface, 80/70/60 cm deep;
- render is for reference only, the actual appearance of the equipment and its color may vary;

Guarantee

- | | | | |
|--|---|---|---|
| <p>30 30 year guarantee - Structural strength of steel and stainless steel components</p> | <p>15 15 year guarantee - Structural failure of steel and stainless steel, for dynamic equipment</p> | <p>10 10 year guarantee - Structural failure of high density polyethylene and high pressure laminates components</p> | <p>5 5 year guarantee - Corrosion of stainless steel and hot dip galvanized and powder coated components; against bark beetles and rot in case of wooden structural elements</p> |
|--|---|---|---|

Detailed information in the guarantee card

Surfaces according to EN 1176-1:2017

| | Description (mm) | Layer thickness (cm) | Maximum fall heights (cm) |
|---------------------------------|------------------------------|----------------------|---------------------------|
| Turf/ top layer of soil (A,B,C) | - | - | ≤100 |
| bark (A,C) | Particle size from 20 to 80 | 30 | ≤200 |
| | | 40 | ≤300 |
| woodchips (A,C) | Particle size from 5 to 30 | 30 | ≤200 |
| | | 40 | ≤300 |
| sand or gravel (A,C) | Particle size from 0,25 to 8 | 30 | ≤200 |
| | | 40 | ≤300 |
| synthetic attested (A,B,C) | Tested according to EN 1177 | | 60 |

Product technical sheet

ROBINIA RB1361

Amount of safe surface corresponding with free fall height:

HIC <60 10,8 m²

Data is subject to change without prior notice.

